

JVC

LIMITED WARRANTY

AUDIO-1

JVC COMPANY OF AMERICA warrants this product and all parts thereof, except as set forth below ONLY TO THE ORIGINAL PURCHASER AT RETAIL to be FREE FROM DEFECTIVE MATERIALS AND WORKMANSHIP from the date of original retail purchase for the period as shown below. ("The Warranty Period")

PARTS	1 YR	LABOR	1 YR
-------	-------------	-------	-------------

THIS LIMITED WARRANTY IS VALID ONLY IN THE FIFTY (50) UNITED STATES, THE DISTRICT OF COLUMBIA AND IN COMMONWEALTH OF PUERTO RICO.

WHAT WE WILL DO:

If this product is found to be defective, JVC will repair or replace defective parts at no charge to the original owner. Such repair and replacement services shall be rendered by JVC during normal business hours at JVC authorized service centers. Parts used for replacement are warranted only for the remainder of the Warranty Period. All products and parts thereof may be brought to a JVC authorized service center on a carry-in basis except for Television sets having a screen size 25 inches and above which are covered on an in-home basis.

WHAT YOU MUST DO FOR WARRANTY SERVICE:

Return your product to a JVC authorized service center with a copy of your bill of sale. For your nearest JVC authorized service center, please call toll free: (800) 537-5722.

If service is not available locally, box the product carefully, preferably in the original carton, and ship, insured, with a copy of your bill of sale plus a letter of explanation of the problem to the nearest JVC Factory Service Center, the name and location of which will be given to you by the toll-free number.

If you have any questions concerning your JVC Product, please contact our Customer Relations Department.

WHAT IS NOT COVERED:

This limited warranty provided by JVC does not cover:

- Products which have been subject to abuse, accident, alteration, modification, tampering, negligence, misuse, faulty installation, lack of reasonable care, or if repaired or serviced by anyone other than a service facility authorized by JVC to render such service, or if affixed to any attachment not provided with the products, or if the model number or serial number has been altered, tampered with, defaced or removed;
- Initial installation and installation and removal for repair;
- Operational adjustments covered in the Owner's Manual, normal maintenance, video and audio head cleaning;
- Damage that occurs in shipment, due to act of God, and cosmetic damage;
- Signal reception problems and failures due to line power surge;
- Video Pick-up Tubes/CCD Image Sensor, Cartridge, Stylus (Needle) are covered for 90 days from the date of purchase;
- Accessories
- Batteries (except that Rechargeable Batteries are covered for 90 days from the date of purchase);

There are no express warranties except as listed above.

THE DURATION OF ANY IMPLIED WARRANTIES, INCLUDING THE IMPLIED WARRANTY OF MERCHANTABILITY, IS LIMITED TO THE DURATION OF THE EXPRESS WARRANTY HEREIN.

JVC SHALL NOT BE LIABLE FOR THE LOSS OF USE OF THE PRODUCT, INCONVENIENCE, LOSS OR ANY OTHER DAMAGES, WHETHER DIRECT, INCIDENTAL OR CONSEQUENTIAL (INCLUDING, WITHOUT LIMITATION, DAMAGE TO TAPES, RECORDS OR DISCS) RESULTING FROM THE USE OF THIS PRODUCT, OR ARISING OUT OF ANY BREACH OF THIS WARRANTY. ALL EXPRESS AND IMPLIED WARRANTIES, INCLUDING THE WARRANTIES OF MERCHANTABILITY AND FITNESS FOR PARTICULAR PURPOSE, ARE LIMITED TO THE WARRANTY PERIOD SET FORTH ABOVE.

Some states do not allow the exclusion of incidental or consequential damages or limitations on how long an implied warranty lasts, so these limitations or exclusions may not apply to you. This warranty gives you specific legal rights and you may also have other rights which vary from state to state.

JVC COMPANY OF AMERICA
DIVISION OF JVC AMERICAS CORP. 1700 Valley Road
Wayne, NJ 07470

REFURBISHED PRODUCTS CARRY A SEPARATE WARRANTY, THIS WARRANTY DOES NOT APPLY. FOR DETAILS OF REFURBISHED PRODUCT WARRANTY, PLEASE REFER TO THE REFURBISHED PRODUCT WARRANTY INFORMATION PACKAGED WITH EACH REFURBISHED PRODUCT.

For customer use:

Enter below the Model No. which is located either on the rear, bottom or side of the cabinet. Retain this information for future reference.

Model No. : _____ Serial No. : _____
Purchase data : _____ Name of dealer : _____

Authorized Service Centers

QUALITY **JVC** SERVICE

HOW TO LOCATE YOUR JVC SERVICE CENTER

TOLL FREE: 1 (800) 537-5722

<http://www.jvc.com>

Dear Customer,

In order to receive the most satisfaction from your purchase, please read the instruction booklet before operating the unit. In the event that repairs are necessary, please call 1 (800)537-5722 for your nearest authorized servicer or visit our website at www.JVC.com. Remember to retain your Bill of Sale for Warranty Service.

Do not service the television yourself

Caution

To prevent electrical shock, do not open the cabinet. There are no user serviceable parts inside. Please refer to qualified service personnel for repairs.

Accessories

To purchase accessories for your JVC product, please call toll free: 1 (800)882-2345 or on the web at www.JVC.com

BT-51001-5
(0301)

JVC



© 2004 Victor Company of Japan, Limited

JVC

SP-XF70

INSTRUCTIONS: SATELLITE SPEAKER SYSTEM

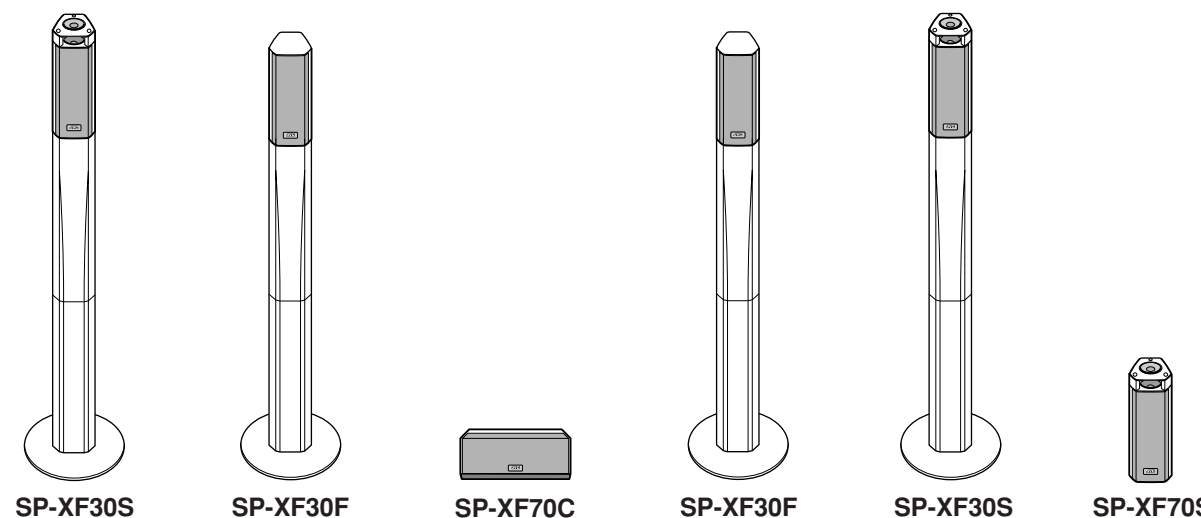
LVT1167-005A

[J]

Thank you for purchasing JVC speakers.

Before you begin using them, please read the instructions carefully.

SP-XF70 consist of the following:



Warnings, Cautions and Others

■ Precautions for installation

- Do not install the speakers on an uneven surface or in a place subject to vibration; otherwise, they may fall over, causing damage or injury.
- The speakers are magnetically shielded to avoid color distortions on TVs if they are installed properly.
 - When placing the speakers near a TV set, turn off the TV's main power switch or unplug it before installing the speakers. Then wait at least 30 minutes before turning on the TV's main power switch again. If there are still distortion, move the speakers further away from the TV.

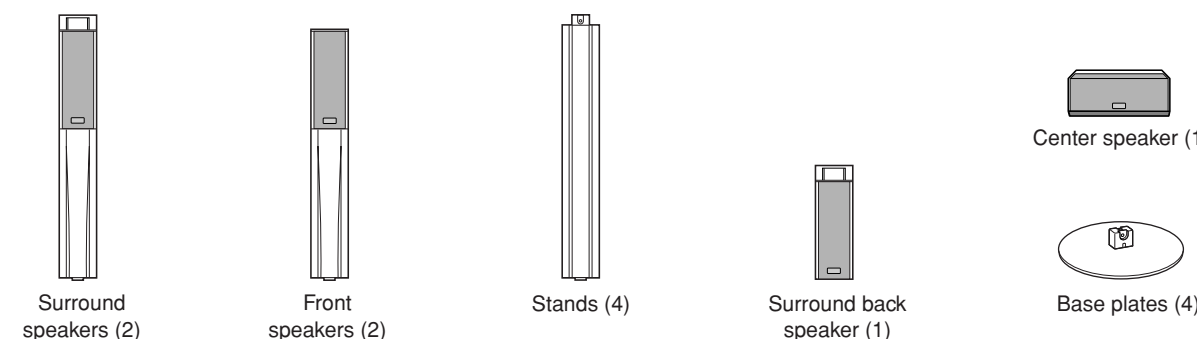
■ Precautions for daily use

- Do not reproduce sounds at so high a volume that they are distorted; otherwise, the speakers may be damaged by internal heat buildup.
- When moving the speakers, do not pull the speaker cords; otherwise, the speakers may fall over, causing damage, or injury.
- When holding a speaker, always grasp the lower portion.

■ Checking the Components

Check to be sure you have the following components.

The number in parenthesis indicates the quantity of the piece supplied.



- Speaker cords— 4 m (13.1 feet) (3): For front/center speakers
- Speaker cords— 10 m (32.8 feet) (3): For surround/surround back speakers
- Screws— M5 x 25 mm (M5 x 1 in.) (8)

If any of the items above are missing, contact your dealer immediately.

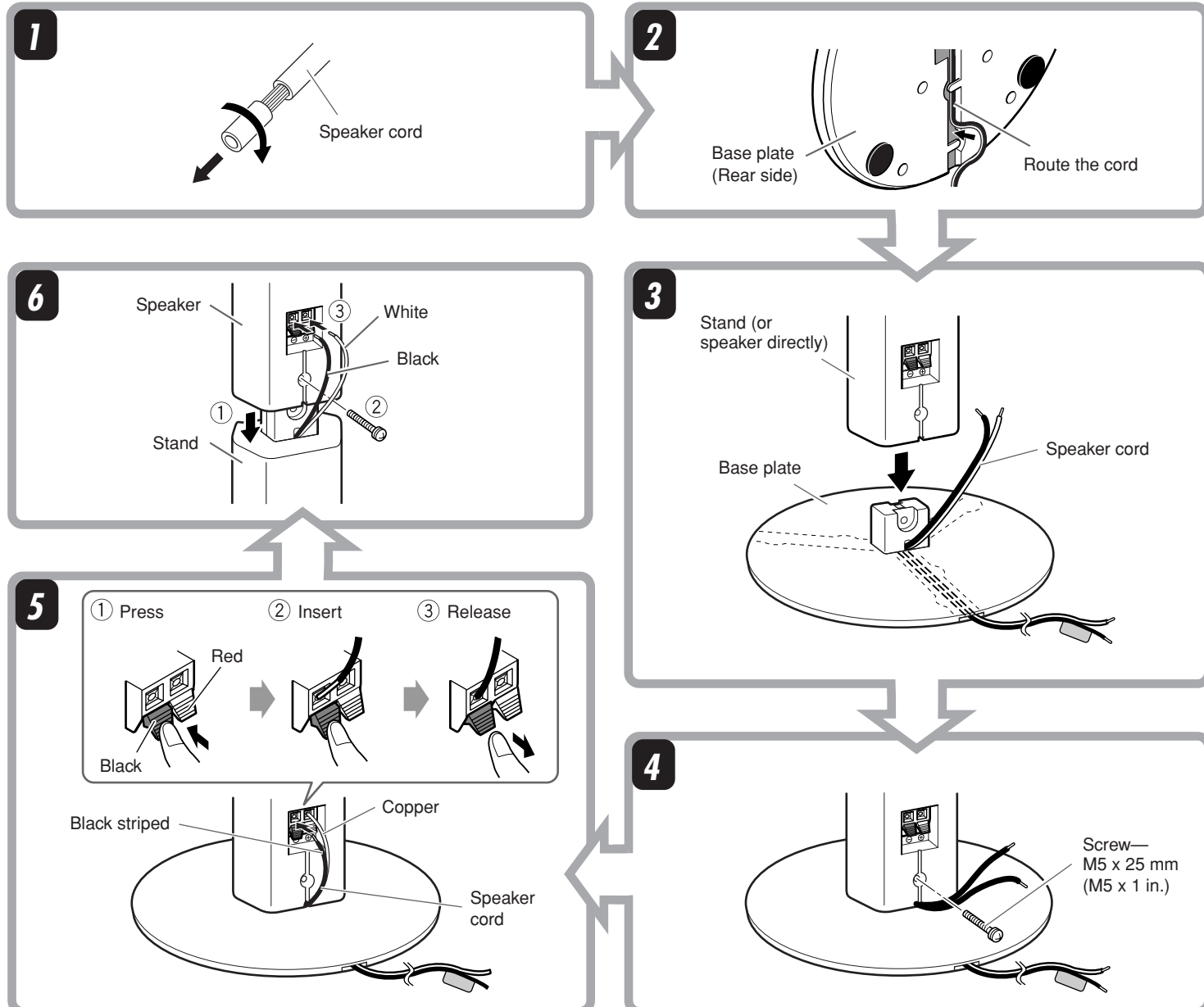
Assembling the front and surround speakers

Assembled speakers: With stand: Refer to Steps 1 to 6
Without stand: Refer to Steps 1 to 5



Before assembling—

- Prepare a Philips screwdriver (not supplied).
- Take care not to drop any component part while assembling; otherwise, it may cause damage to the floor or injury.
- Each speaker cord has its name tag attached to one end. Attach the end without the name tag to the speaker terminal.



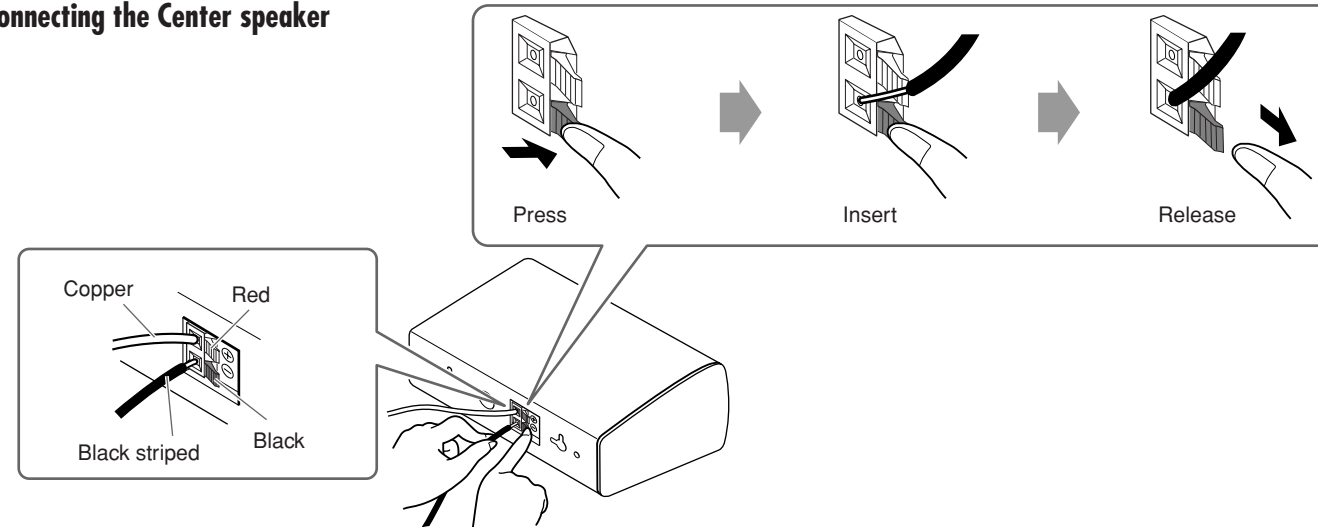
Connections

■ Connecting the speaker system to the amplifier

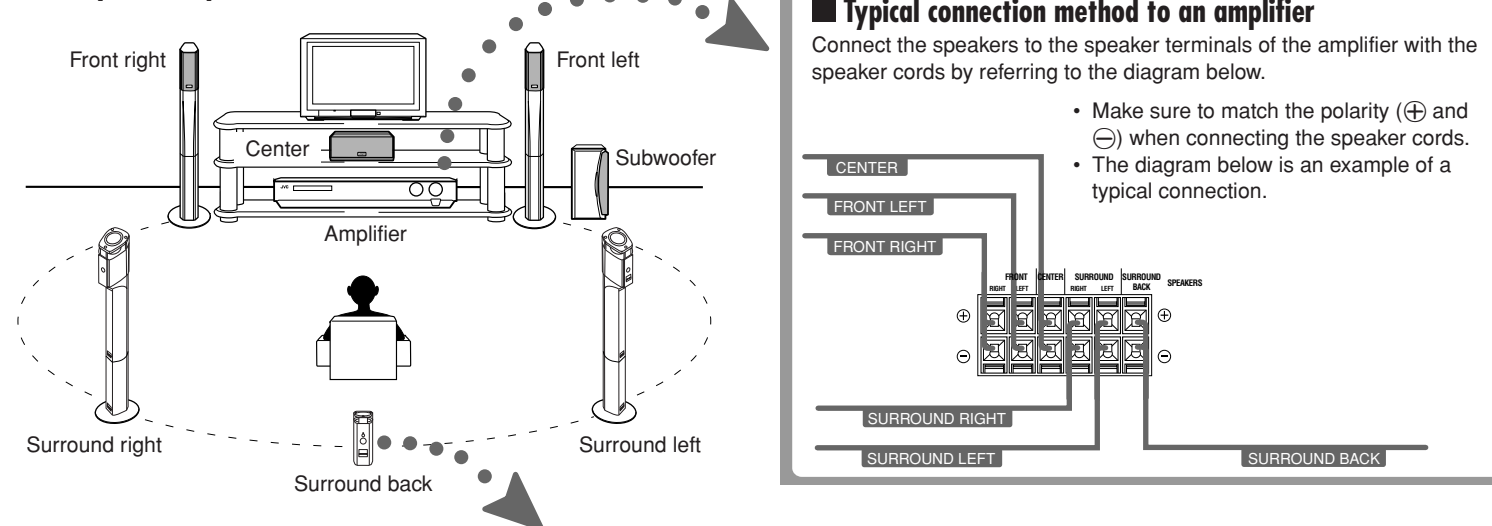
Before connecting—

- Turn off the power to the amplifier before connecting the speaker system; otherwise, the speakers may be damaged.
- The impedance of each speaker is 6 Ω. Before connecting them to your amplifier, check the speaker impedance range of your amplifier. If the impedance of this speaker is out of the speaker impedance range indicated on the amplifier, you cannot connect this system to the amplifier.
- The maximum power handling capacity of the speakers are 100 W. Excessive input will result in abnormal noise and possible damage.
- Be sure to turn down the volume level to prevent unwanted noise before performing following operations:
 - Turning on or off other components,
 - Operating the amplifier,
 - Tuning FM stations,
 - Fast-forwarding a tape,
 - Continuously reproducing high frequency oscillation or high pitch electronic sounds.
- When using a microphone, do not aim it at the speakers or use it near the speakers; otherwise, the howling which occurs may damage the speakers.
- Before replacing the cartridge, always turn off the power to the turntable; otherwise, the clicking noise may damage the speakers.

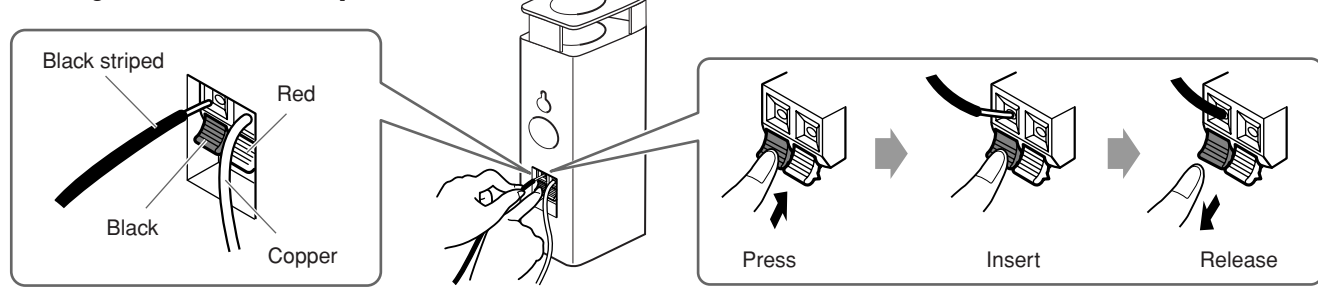
■ Connecting the Center speaker



■ Speaker layout



■ Connecting the Surround back speaker



Specification

SP-XF30F (Front speakers)

Type: 2-way 3-speaker Bass reflex type (Magnetically-shielded type)
Speaker unit: 5.5 cm (2 3/16 in.) cone (× 2), 3.0 cm (1 1/16 in.) dome
Frequency range: 95 Hz to 40 000 Hz
Input impedance: 6 Ω
Power handling Capacity: 100 W
Sound pressure level: 80 dB/W•m
Dimensions (W × H × D) (approx.):
250 mm × 1103 mm × 250 mm
(9 7/8 in. × 43 7/16 in. × 9 7/8 in.)
Mass (approx.): 3.67 kg (8.1 lbs) each

SP-XF30S (Surround speakers)

Type: 2-way 3-speaker Bass reflex type (Magnetically-shielded type)
Speaker unit: 5.5 cm (2 3/16 in.) cone (× 2), 3.0 cm (1 1/16 in.) dome
Frequency range: 90 Hz to 40 000 Hz
Input impedance: 6 Ω
Power handling Capacity: 100 W
Sound pressure level: 77 dB/W•m
Dimensions (W × H × D) (approx.):
250 mm × 1103 mm × 250 mm
(9 7/8 in. × 43 7/16 in. × 9 7/8 in.)
Mass (approx.): 3.83 kg (8.5 lbs) each

SP-XF70C (Center speaker)

Type: 2-way 3-speaker Bass reflex type (Magnetically-shielded type)
Speaker unit: 5.5 cm (2 3/16 in.) cone (× 2), 3.0 cm (1 1/16 in.) dome
Frequency range: 90 Hz to 40 000 Hz
Input impedance: 6 Ω
Power handling Capacity: 100 W
Sound pressure level: 81 dB/W•m
Dimensions (W × H × D) (approx.):
209 mm × 85 mm × 92 mm
(8 1/4 in. × 3 3/8 in. × 3 5/8 in.)
Mass (approx.): 0.87 kg (2.0 lbs)

SP-XF70S (Surround back speaker)

Type: 2-way 3-speaker Bass reflex type (Magnetically-shielded type)
Speaker unit: 5.5 cm (2 3/16 in.) cone (× 2), 3.0 cm (1 1/16 in.) dome
Frequency range: 90 Hz to 40 000 Hz
Input impedance: 6 Ω
Power handling Capacity: 100 W
Sound pressure level: 78 dB/W•m
Dimensions (W × H × D) (approx.):
84 mm × 211 mm × 120 mm
(3 5/16 in. × 8 5/16 in. × 4 3/4 in.)
Mass (approx.): 0.96 kg (2.2 lbs)